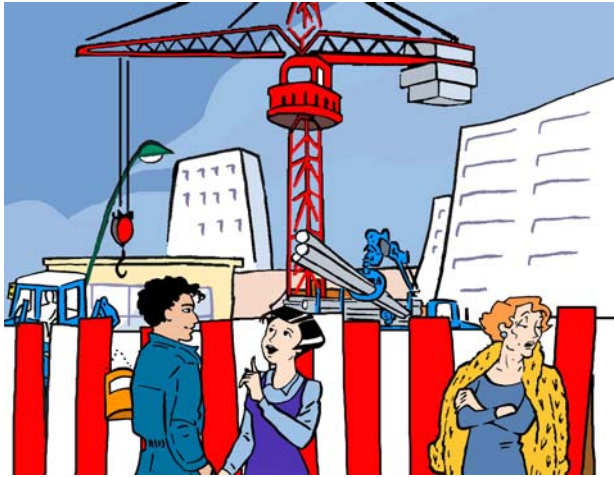


100 job descriptions brought to life	CRANE DRIVER	3.2/17.3
		Eval. :



Here is the same text but you have to complete it with the right words. The first letter is given, as is the number of letters for each word to be written.

Ken: Yes, I know you, Kelly, your shop is very near the b _ _ _ _ _
s _ _ _ ! No, don't worry. The l _ _ _ _ never drop on clothes shops! No, I'm kidding! You know, we take all sorts of s _ _ _ _ _ measures... I do that myself! I'm responsible for my m _ _ _ _ _ from A to Z. That's right! For example, I set up my c _ _ _ _ on the site after checking the state of the g _ _ _ _ _ , of course, and fixing the crane in the right place to do the l _ _ _ _ _ in the best possible conditions. Oh yes, I have to set it up! With help, obviously! And I check everything, and all the time! The brakes, the security systems, tightening all the bolts, the cables, everything!
 Are the loads heavy? Too right they are! Up to 200 tonnes of m _ _ _ _ _ here. Once I had to l _ _ _ 1000 tonnes when we were building the stadium! An important part of my work involves calculating the w _ _ _ _ _ of the load in relation to the range of the j _ _ and its c _ _ _ _ _ _ _ _ _ . And that's... Yes Ms Actress? You'd like to come up to my c _ _ _ _ with me, 50 metres above ground?! Ah, sorry, that's not allowed. But I'd be happy to invite you for a drink at Yannis's, just over there and only one metre above ground! You'll come too, won't you Kelly?

100 job descriptions brought to life	CRANE DRIVER	3.2/17.3
		Eval. :



Crane driver

Ken: I know you! You're the great actress Edwina Actress! What an honour! You're interested in my work?... Really? Right now I'm on the ground for my lunch break, but I spend most of my time in my cabin, up there, lifting, moving and distributing materials for the building site. Oh... all sorts of materials! Here it's mainly building blocks, scaffolding, concrete, prefabricated walls, reinforcements, steel girders... But when we work on a bridge, a dam or a viaduct, it's completely different! One of my colleagues even lifted a whole fishing boat out of the water and put a train back on its rails! You can't say our job is monotonous! And we move around a lot...

.../...



A few words relating to a crane driver's work:

Here is a text using a lot of words from the list. Read it carefully, as you will have to use the same words afterwards.

Altitude	Building	Building site
Cabin	Civil engineering	Coordination
Counterweight	Crane	Distance
Ground	Jib	Lift
Lifting	Load	Machine
Maintenance	Materials	Move
Movement	Radio contact	Safety
Team	Weight	Wind

That's right, I have to travel around to the different building sites. I'd like to work as a crane driver in a port... I'd love to have been a fisherman like my father but I haven't got good sea legs! But I'm not afraid of heights! You can't suffer from vertigo in this job! You have to keep your calm, because in addition to being up in the air, the crane sways in the wind. Well, if the wind speed goes above 40 mph I stop my crane and leave my position. Yes, I'm one of those people who are always watching the weather forecast! I have to.

It's true I'm always alone in my cabin, but I never feel lonely, believe me. And anyway, I'm in constant contact with the signal men, by radio or even by signs. And right up there, I have magnificent views with 360-degree vision! ...Can I see the window of your room at the Theatre Hotel?! Possibly... Er, right, you'll give me a little wave!

*

In a similar line of work, Ken could also have been:
public works operator – general foreman – carpenter – roofer – bridge man – overhead crane man – electricity network fitter...

Ken: Yes, I know you, Kelly, your shop is very near the **building site**! No, don't worry. The **loads** never drop on clothes shops! No, I'm kidding! You know, we take all sorts of **safety** measures... I do that myself! I'm responsible for my **machine** from A to Z. That's right! For example, I set up my **crane** on the site after checking the state of the **ground**, of course, and fixing the crane in the right place to do the **lifting** in the best possible conditions. Oh yes, I have to set it up! With help, obviously! And I check everything, and all the time! The brakes, the security systems, tightening all the bolts, the cables, everything!

Are the loads heavy? Too right they are! Up to 200 tonnes of **materials** here. Once I had to **lift** 1000 tonnes when we were building the stadium! An important part of my work involves calculating the **weight** of the load in relation to the range of the **jib** and its **counterweight**. And that's... Yes Ms Actress? You'd like to come up to my **cabin** with me, 50 metres above ground?! Ah, sorry, that's not allowed. But I'd be happy to invite you for a drink at Yannis's, just over there and only one metre above ground! You'll come too, won't you Kelly?